

1995 ANNUAL REPORT

Texas Racing Commission



**David J. Freeman
Executive Secretary**

**NOTE: INFORMATION CONTAINED IN THIS REPORT IS BASED ON
THE 1995 CALENDAR YEAR EXCEPT WHERE INDICATED.
UNLESS OTHERWISE STATED, INFORMATION IS NOT AUDITED.**

**TEXAS RACING COMMISSION
8505 CROSS PARK, SUITE 110
AUSTIN, TX 78754**

**MAILING ADDRESS:
P. O. BOX 12080
AUSTIN, TX 78711-2080**

**PHONE: 512 833-6699
FAX: 512 833-6907**

AN EQUAL OPPORTUNITY EMPLOYER



1995 Annual Report

Table of Contents

Letter to the Governor from Commission Chair	3
Letter to the Governor from Executive Secretary	4
Letter to Commission Chair from Department of Public Safety	6
Policy Making Body	9
Organizational Structure	10
Regulatory Functions	11
Schedule of Funds Received and Expended - Fiscal Year 1995	14
Texas-Bred Programs	16
Equine Research	17
Drug Testing	17
1995 Statistical Racetrack Information	18
Six Year Overview of Pari-Mutuel Racing	20
Statistical Comparison of Growth in Activity & Revenue vs. Commission Expenditures	21
Graphs - Source of Handle, Live & Simulcast Performances, & Purses Paid	22
GREYHOUND RACETRACKS:	
Corpus Christi Greyhound Racetrack	24
Gulf Greyhound Park	25
Valley Greyhound Park	26
HORSE RACETRACKS:	
Bandera Downs	27
Gillespie County Fair & Festivals Association	28
Manor Downs	29
Retama Park	30
Sam Houston Race Park	31
Trinity Meadows Raceway	32
Lone Star Jockey Club	33
Longhorn Downs	33
Lubbock Downs	33
Racetrack Addresses & Phone Numbers	34

Commissioners
DEORSEY E. MCGRUDER, JR., D.V.M.
PAT PANGBURN
JAMES L. SCHULZE, D.V.M.
ANNE DUNIGAN WILSON
LUKIN T. GILLILAND, JR.
Vice-Chair
LARRY J. CHRISTOPHER
Chair



TEXAS RACING COMMISSION
P. O. Box 12080
Austin, TX 78711-2080
(512) 833-6699
Fax (512) 833-6907

Ex-Officio Members
ROBERT HOLT
Chair, Public Safety Commission
JOHN SHARP
Comptroller of Public Accounts

DAVID J. FREEMAN
Executive Secretary

January 31, 1996

The Honorable George W. Bush
Governor of the State of Texas
State Capitol, Room 200
Austin, Texas 78711

Dear Governor Bush:

It is my pleasure to submit to you the 1995 Annual Report of the Texas Racing Commission in accordance with Section 3.10 of the Texas Racing Act (Article 179e, Vernon's Texas Civil Statutes).

This report covers the activities of the Commission during 1995 and provides information relating to all aspects of the Texas greyhound and horse racing programs and breeding programs.

The Commission remains dedicated to its commitment to provide effective, efficient regulation of the pari-mutuel industry. We look forward to working with you and your staff to address ways to improve pari-mutuel racing in Texas.

Very truly yours,

A handwritten signature in cursive script that reads "Larry J. Christopher".

Larry J. Christopher
Chairman

LJC:mjc

Commissioners
DEORSEY E. MCGRUDER, JR., D.V.M.
PAT PANGBURN
JAMES L. SCHULZE, D.V.M.
ANNE DUNIGAN WILSON
LUKIN T. GILLILAND, JR.
Vice-Chair
LARRY J. CHRISTOPHER
Chair



TEXAS RACING COMMISSION
P. O. Box 12080
Austin, TX 78711-2080
(512) 833-6699
Fax (512) 833-6907

Ex-Officio Members
ROBERT HOLT
Chair, Public Safety Commission
JOHN SHARP
Comptroller of Public Accounts

DAVID J. FREEMAN
Executive Secretary

January 31, 1996

The Honorable George W. Bush
Governor of the State of Texas
State Capitol, Room 200
Austin, Texas 78711

Dear Governor Bush:

As the chief administrator of the Texas Racing Commission, I respectfully submit the Commission's 1995 Annual Report.

The precarious financial situation of Texas' pari-mutuel racetracks was graphically exposed during 1995. Despite the tough economic situation, most of the racetracks and the racing industry displayed remarkable tenacity that has ultimately provided insight into the shape and future of horse and greyhound racing in this State.

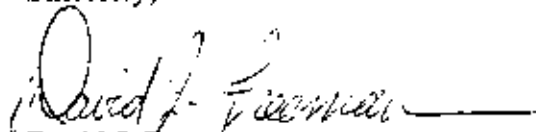
Clearly, 1995 was the most disappointing year ever for racing in Texas in terms of losses in employment opportunities and in economic development in central Texas and in the Rio Grande Valley. On June 16, Bandera Downs, located in the hill country between San Antonio and Kerrville, abruptly ended its racing season early citing mounting financial losses as a result of competition from the opening of Retama Park in Selma, near San Antonio. In September, Valley Greyhound Park in Harlingen ended its live racing season and shortly thereafter ceased all operations, including simulcast wagering, due to declining attendance and wagering and the resulting operating losses. Retama Park in Selma opened for its inaugural season on April 7 to a Texas pari-mutuel record crowd of over 29,631 spectators. However, by November the track had not met its preopening projections and had to end its race meet prematurely. Retama Park is now seeking revenue sources to enable it to open its live race meeting on June 8. Concurrently, track management is seeking to sell the facility to avoid bankruptcy proceedings. In 1995, Gulf Greyhound Park in La Marque saw its live handle (wagers) decline by nearly \$54 million from its 1994 level and Corpus Christi Greyhound Race Track posted its lowest handle and attendance totals since its opening in 1990.

There were, however, some positive developments during the year. Sam Houston Race Park emerged from Chapter 11 bankruptcy reorganization without interruption of its live racing program or its simulcast wagering schedule. Since its reorganization, the track has posted steady increases in its wagering levels to the extent that it is now the fastest growing pari-mutuel horse track in the United States. Lone Star Park at Grand Prairie finally secured the necessary financing to begin construction of its facility between Dallas and Arlington. The projected opening date for the long anticipated racetrack is December 14. Manor Downs near Austin conducted its sixth consecutive year of pari-mutuel racing paying the highest purse schedule to horse owners in its history. Trinity Meadows in Willow Park, although encountering its lowest daily average handle since its opening in 1991, continued to operate on sound financial footing while offering live and simulcast horse racing to north Texas residents.

The Racing Commission never wavered in its regulatory obligations to ensure the integrity of racing in this state. However, recognizing the difficult times being encountered by the industry, the Commission responded accordingly by downsizing its staff, by relocating to smaller and less costly offices, by holding the line on fees assessed to the industry for its regulation, and by allowing racetracks more flexibility to meet their market demands. The national and international pari-mutuel industry, due to increasing competition from other gambling and entertainment venues and because of remarkable technological advances, has changed from its traditional sense seemingly overnight. The Texas pari-mutuel industry is no different. The Commission has kept pace with the changes and has developed programs and initiatives to ensure the continued honesty of the sport and to provide the necessary regulatory safeguards of an industry whose main business is gambling. To the benefit of the people of Texas, there has been little turnover of the core professional staff of the Commission resulting in stability, experience, integrity, and unquestioned dedication to serving the people of Texas with the highest professional and ethical standards.

On behalf of the Commissioners and the Commission staff, I express gratitude and admiration for the assistance of all State agencies upon which the Commission depends to fulfill its obligations. I would especially like to thank the Office of the Comptroller of Public Accounts and the Department of Public Safety for their continued assistance and dedication to safeguarding racing's integrity.

Sincerely,



David J. Freeman
Executive Secretary

TEXAS DEPARTMENT OF PUBLIC SAFETY

5805 N. LAMAR BLVD. - BOX 4087 - AUSTIN, TEXAS 78773-0001
512/465-2000



JAMES R. WILSON
DIRECTOR

DUDLEY M. THOMAS
ASST. DIRECTOR



COMMISSION
ROBERT B. HOLT
CHAIRMAN
RONALD D. KRIST
JAMES B. FRANCIS, JR.
COMMISSIONERS

JAN 8 1996

January 02, 1996

Mr. Larry Christopher, Commission Chair
Texas Racing Commission
8505 Cross Park Drive, Suite 110
Austin, Texas 78754-4594

**RE: ARTICLE 179e, SECTION 3.10
VERNON'S TEXAS CIVIL STATUTES**

Dear Mr. Christopher:

Article 179e, Section 3.10 of Vernon's Texas Civil Statutes requires the Texas Racing Commission (TRC) to obtain a comprehensive report from the Texas Department of Public Safety (DPS) that would indicate any organized crime activity in Texas, as well as information on any and all illegal gambling. As required by statute, we submit the following:

1995 - CRIMINAL ACTIVITY AND CRIME TRENDS

The crime rate for many offenses decreased during the past year continuing a nation-wide trend. The decrease has been variously attributed to an increase in community policing, stricter sentencing guidelines for offenders, more habitual offender statutes, and the aging of the so called baby boomers." One significant exception to this trend was an increase in the number of arrests for the abuse of illegal drugs. Investigations conducted by personnel of the Criminal Intelligence Service identified other prevalent criminal activities. In 1995, investigators documented extensive criminal activity relating to credit card abuse, insurance fraud, and counterfeiting of drivers' licenses and other official documents including immigration documents used to obtain Texas Racing Commission licenses. Additionally, fraud schemes associated with telemarketing businesses have grown to the extent that task forces have been established on the state and federal level to combat this crime that bilked innumerable citizens of their hard earned savings.

ARTICLE 179e, SECTION 3.10
VERNON'S TEXAS CIVIL STATUTES
January 02, 1996
Page 2

Bank robberies, other aggravated robberies, and drug induced " Mickey Finn" type robberies remain a law enforcement concern. Bribery, corruption, and official misconduct associated with elected and appointed officials were documented all to frequently. Burglary, larceny, auto theft, and embezzlement are crimes that continue too occur on a frequent basis. Civil unrest and official corruption in Mexico continue to be of particular concern due to the close proximity and shared border with Texas. The impact of implementation of the North American Free Trade Agreement has not been fully realized as of this writing, but criminal activities associated with opening the border with Mexico are expected to be significant.

Street and prison gangs continue to grow in strength and numbers. Violent crimes committed by juveniles are an ever increasing concern. Crime in public schools, including possession of weapons and drugs, has become common in both urban and rural areas. The increased popularity of computers has resulted in an increase in Hi-Tech crimes. Law enforcement personnel have investigated computer related crimes ranging from aggravated robbery of computer components to promotion of gambling and sexual oriented offenses on the internet. The use of computers in illegal gambling causes grave concerns in law enforcement as this crime is in its infancy but is growing rapidly. Public interest in video machine forms of gambling is a growing concern for law enforcement. Gambling experts have classified video machine gambling as one of the most addictive forms of gambling now known. The apprehension and removal of violent parole violators and career criminals from the streets of Texas remains a major priority of state and local officers.

ILLEGAL GAMBLING

The 73rd Session of the Texas Legislature reduced the penalties for illegal gambling offenses from felony punishments to misdemeanor punishments. Bookmaking is one such offense. Bookmaking investigations are time consuming and require more manpower than many agencies can devote to misdemeanor offenses. This lack of investigative interest on the part of many law enforcement agencies has resulted in a proliferation of bookmaking and other illegal gambling activities throughout the state. Bookmakers continue to take action on traditional collegiate and professional sporting events such as football, basketball, baseball, and hockey. Investigations have documented that bookmakers in the metropolitan areas are taking illegal wagers on horse races conducted at Texas pari-mutuel facilities. Criminal intelligence information indicates that bookmakers are frequently using telephones, including cellular telephones, at pari-mutuel facilities to communicate gambling information and to take wagers. The combination of unlimited telephone access and year round simulcast pavilions at pari-mutuel facilities has provided bookmakers an area of opportunity that often thwarts traditional law enforcement efforts and deprives the state of income on gambling proceeds that do not go through the betting windows.

ARTICLE 179e, SECTION 3.10
VERNON'S TEXAS CIVIL STATUTES
January 02, 1996
Page 3

This report has been prepared to apprise the Texas Racing Commission of the extent of the current problems in Texas regarding the above listed areas of concern.

Sincerely,

Don R. Plemons

Don R. Plemons
Commander
Criminal Intelligence Service
Texas Department of Public Safety

DRP:tr

1995 Annual Report

Policy Making Body

The Commission is composed of eight members, six of whom are appointed by the Governor with the advice and consent of the Senate. The Chair of the Public Safety Commission and the Comptroller of Public Accounts serve as ex-officio members of the Commission with full voting privileges. The six non-salaried commissioners serve overlapping six-year terms.

Of the six appointed Commissioners, two must be veterinarians, one specializing in the treatment of small animals, and one in the treatment of large animals. Of the four members who are not veterinarians, two must have knowledge or experience related to

greyhound racing and two must have knowledge or experience related to horse racing. The Governor designates the chair. The eight members elect the vice-chair for a term of two years.

On matters of general application to both greyhound and horse racing, the Commission acts as a single body. For purposes of rule making and licensing, or for any action relating exclusively to horse racing or exclusively to greyhound racing, the Commission acts as separate sections.

In 1995, there were six full Commission meetings and one meeting of the Horse Section only.

<i>Commissioners</i>	<i>Section</i>	<i>Hometown</i>	<i>Term Expires</i>
Larry J. Christopher, Chair	Greyhound	Crockett	2/1/01
Lukin T. Gilliland, Jr., Vice-Chair	Horse	San Antonio	2/1/99
James L. Schulze, D.V.M.	Horse	Conroe	2/1/01
Deorsey E. McGruder, Jr., D.V.M.	Greyhound	Dallas	2/1/99
Pat Pangburn	Greyhound	Southlake	2/1/97
Anne Dunigan Wilson	Horse	Abilene	2/1/97

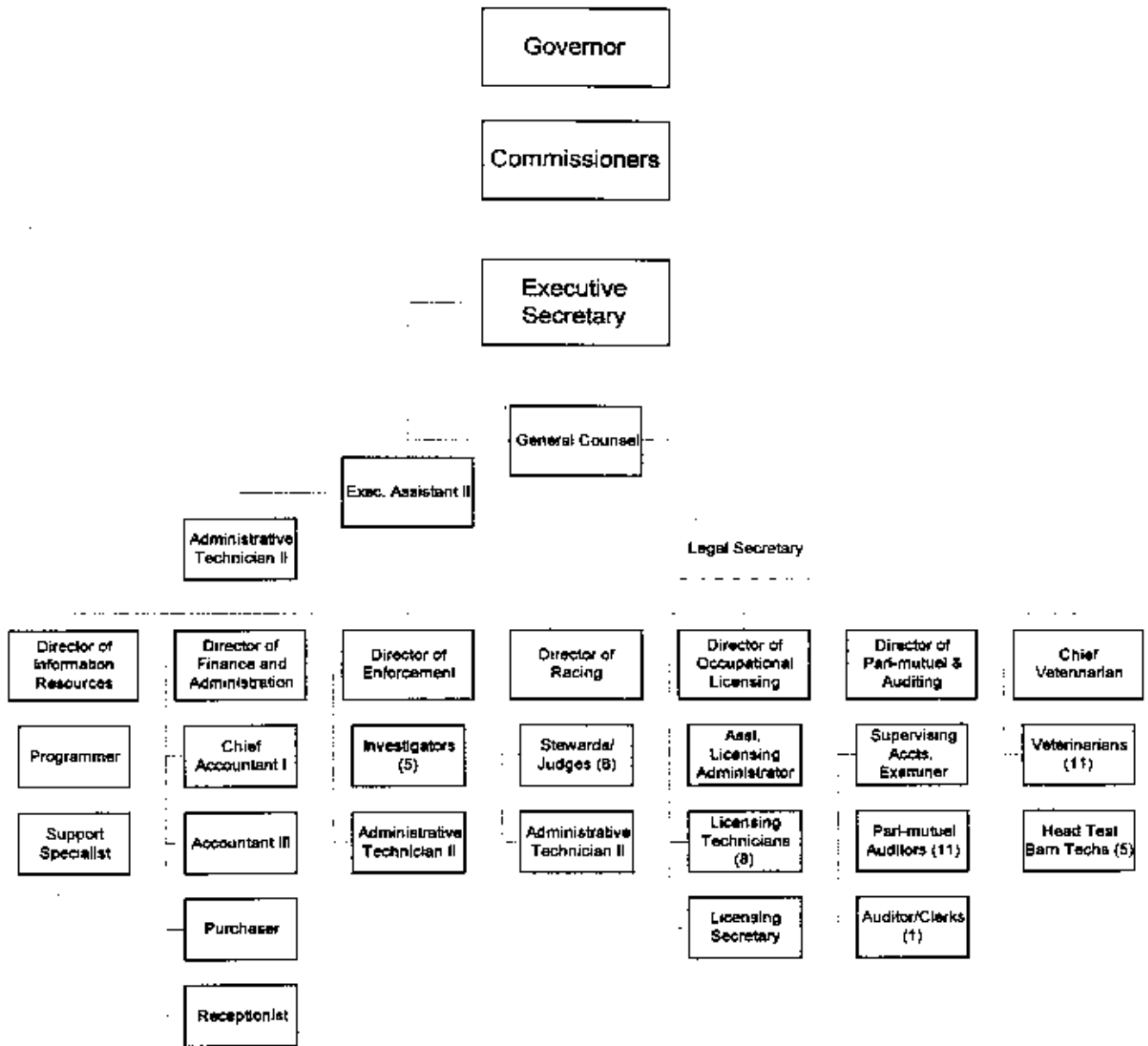
Ex-Officio Members:

Robert Holt, Chair, Public Safety Commission	Midland	N/A
John Sharp, Comptroller of Public Accounts	Austin	N/A

1995 Annual Report

Organizational Chart

as of 12/31/95



--- Denotes vacant position

1995 Annual Report

Regulatory Functions

The Commission's operations are divided into three main groups: Administration, Enforcement, and Racetrack Licensing.

ADMINISTRATION

EXECUTIVE DIVISION

The Executive Division includes the Executive Secretary and General Counsel and their staff. As head of the agency, the Executive Secretary supervises the agency's activities as a whole. This division is also responsible for recommending race date allocations, assessing administrative penalties against racetrack licensees, and prosecuting appeals from decisions made by the Board of Stewards/Judges at the operating racetracks.

The Sunset Advisory Commission completed its comprehensive review of the Commission in 1994. Their recommendations to the 74th Legislature which convened on January 10, 1995 included: to continue the Commission for six years; to eliminate the separate horse and greyhound sections and have the board act as one on all issues; and to change the qualifications for membership to include six public members who have general knowledge of business or agribusiness.

Although the bill passed out of the Senate, time expired before the bill could be voted on in the House of Representatives. A safety net bill had been previously passed which continued the Commission for two years. The Sunset Advisory Commission will update their review and submit their proposal to the 75th

Legislature which convenes on January 14, 1997.

FINANCE DIVISION

The Finance Division manages the budget, accounting, purchasing, personnel, and other administrative functions of the Commission.

During 1995, the division assisted in obtaining budget appropriations from the Legislature for the 1996-97 fiscal years, as well as assisting in fiscal analysis of the sunset legislation and other gambling legislation considered by the Legislature.

The division submitted a cost savings plan of \$148,409 to the Texas Incentive and Productivity Commission. By implementing this plan, classified employees of the agency received a pro-rata share of 18.75% of the savings amount.

During 1996 the division will be forecasting revenue and reviewing the overall fee structure for the racetracks, as well as continuing to streamline the administrative functions of the agency.

INFORMATION RESOURCES DIVISION

The purpose of this division is to procure and support all hardware and software necessary for the day-to-day activities of the Commission. The department also supports and develops the agency's UNIX machines, network and Oracle database.

1995 Annual Report

The division handled 146 hardware or software related problems, developed or modified 819 programs/reports and responded to 44 open record requests.

In 1996 the division will be working towards re-engineering its database to conform to new GUI, mouse driven, standards.

ENFORCEMENT

ENFORCEMENT DIVISION

The Commission's investigators administer and coordinate the enforcement of the Commission's Rules and the Texas Racing Act. Investigations were conducted on animal drug positives, criminal histories returned on license applicants, illegal wagering, use and possession of contraband, drug abuse and narcotics trafficking, and other illicit activities that could affect the integrity of pari-mutuel racing.

The Enforcement Division conducted a total of 685 investigations into suspected rule and law violations in 1995. In addition, 730 serious criminal history reports were received from the Department of Public Safety and the Federal Bureau of Investigation on current and former licensees and 1,781 minor criminal history reports were received and reviewed for licensing compliance.

The opening of Lone Star Park in December of 1996 will bring new demands on the investigative staff. The Enforcement Division will continue to provide investigation services responsive to the needs of the Commission and staff.

RACETRACK LICENSING

RACING DIVISION

The Division includes Commission Stewards and Racing Judges, at least one Commission Veterinarian for each operating pari-mutuel racetrack, and other support personnel. The Racing Division is responsible for supervising races being conducted and for implementing the Commission's drug testing program for race animals. In addition, Stewards/Judges are authorized to suspend licenses for up to one year and to assess fines of up to \$5,000 if warranted.

Stewards/Judges at greyhound and horse racetracks handed down a total of 1,187 rulings. Of that number, 833 resulted in fines, 268 resulted in suspensions, and 63 resulted in the licensee being restored to good standing.

PARI-MUTUEL AUDITING DIVISION

To safeguard the interest of the wagering public and the state, the Pari-Mutuel Auditing Division tests the computer programs that calculate odds and payoffs on wagers, examines wagering patterns, and oversees mutuel operations at the racetracks, as well as calculating and distributing funds for the Texas-Bred Incentive Program.

The completion of these tasks assures the wagering public and the state that the correct amount of dollars are being distributed as required by the Texas Racing Act.

1995 Annual Report

OCCUPATIONAL LICENSING DIVISION

The Occupational Licensing Division is responsible for issuing occupational licenses and registrations to all persons involved in pari-mutuel greyhound and horse racing. This division works closely with the Enforcement Division and the Stewards/Judges. Licensing staff at each racetrack help to maintain the integrity of the industry by insuring that all participants are licensed and are in good standing.

The opening of Class 1 racing at Retama Park significantly added to the division's activity in 1995. Throughout the year, the division placed special effort on the simplification of and improvement in procedures coupled with continuing on-site training of the licensing staff at the racetracks. This program resulted in continued improvement in the division's performance of providing customer service to our varied constituencies in the racing industry. The theme of continuous improvement will be a part of each year's plan.

In 1996, Lone Star Park at Grand Prairie will begin operation. The Licensing Division will be involved in the immediate licensing of racetrack staff for the pre-opening phase. The major licensing activity will begin in late fall to prepare for LSP's live race meet which begins in December.

In 1995, the Commission issued 20,204 occupational licenses in the following categories:

A & M Lab Staff	34
Admissions	337
Adoption Staff	7
Announcer	16
Apprentice Jockey	25
Assistant Farrier	8
Association Asst. Management	59

Association Management Staff	55
Association Office Staff	183
Association Officer	39
Association Steward/Judge	18
Association Other	15
Association Veterinarian	10
Asst. Trainer/Owner	71
Assistant Starter	85
Assistant Trainer	173
Authorized Agent	88
Chaplain	4
Commissioner	7
Cool-Out	1
Entry Clerk	5
Exercise Rider	269
Farrier	89
Food Service	674
Groom	1,907
Industry Representative	6
Jockey	325
Jockey Agent	52
Kennel Helper	210
Kennel Owner	4
Kennel Owner/Trainer	10
Kennel Owner/O/T	21
Kennel Owner/Owner	44
Law Enforcement	152
Lead-Out	256
Licensing Clerk	16
Maintenance	553
Marketing Staff	56
Medical Staff	28
Miscellaneous	44
Multiple Owner	1,301
Mutuel Clerk & Other	1,266
Outrider	17
Owner	6,623
Owner-Trainer	1,282
Parking Attendant	196
Pony Person	159
Racing Official	135
Security Officer	381
Stable Foreman	5
State Judge or Steward	8
State Veterinarian	22
Tattooer	2
Test Technician	77
Tooth Floater	3
Tote Technician	30
Training Facility General Mgr.	3
Training Facility Employee	7
Trainer	538
TX DPS	45
TX Comptroller Staff	4
TxRC Consultant	4
TxRC Staff	57
Valet	50
Vendor Employee	1,959
Veterinarian's Assistant	22
Veterinarian	52
TOTAL	20,204

1995 Annual Report

Schedule of Funds Received and Expended

	General Revenue <u>Fund (001)</u>
REVENUES:	
Racetrack Licenses - Horses	
Class 1 Tracks	\$60,000
Class 2 Tracks	20,000
Class 3 Tracks	7,000
Training Tracks	<u>6,000</u>
Total Racetrack Licenses - Horses	93,000
Racetrack Licenses - Greyhounds	50,000
Outstanding Tickets	601,099
Race Day Fees:	
Horses - Live	208,254
Horses - Simulcast	233,575
Greyhounds - Live	562,100
Greyhounds - Simulcast	<u>21,750</u>
Total Race Day Fees	1,025,679
Occupational Licenses	1,004,973
Breakage:	
Horses	4,411,126
Greyhounds	<u>954,862</u>
Total Breakage	5,365,988*
Track Official's Fees	815,846
Other	38,740
TOTAL REVENUE	<u>\$8,995,325</u>

NOTE: Breakage revenue includes all money deposited by the racetracks pursuant to V.T.C.S. Art. 179 e, Sec. 6.08 (d), (h), and (l), Sec. 6.09 (d) and Sec. 6.091 (a) (2) - (4).

1995 Annual Report

Fiscal Year 1995

(9/1/94 - 8/31/95)

	General Revenue <u>Fund (001)</u>
EXPENDITURES:	
Salaries & Wages	\$2,298,371
Payroll Related Costs	646,025
Professional Fees and Services	44,493
Travel	130,744
Materials & Supplies	96,693
Communications & Utilities	98,113
Repairs & Maintenance	69,556
Rentals & Leases	111,854
Printing & Reproduction	13,166
Other Expenditures	45,821
Capital Outlay	38,191
Distributions to Breed Registries	<u>4,405,543</u>
TOTAL EXPENDITURES	<u>\$7,998,570</u>
EXCESS REVENUES OVER EXPENDITURES	<u>\$996,755</u>
TRANSFERS OUT:	
General Revenue Fund	675,000
Equine Research	91,365
Texas Commission on Alcohol & Drug Abuse	596,735
Savings Measurement Account	37,469
Section 153 Budget Reductions	10,554
School Child Care Fund	212
TOTAL TRANSFERS OUT	<u>\$1,411,335</u>
EXCESS REVENUES OVER EXPENDITURES & TRANSFERS	<u>\$(414,580)*</u>

NOTE: Cash used to fund shortfall for FY '95 was from excess revenues carried forward from prior fiscal years.

1995 Annual Report

Texas-Bred Programs

Two of the purposes of the Texas Racing Commission are to encourage agriculture and to encourage the horse and greyhound breeding industries in the state. The Texas-Bred Incentive Program supports these goals by providing purse supplements and monetary breeders' awards to breeders and owners of Texas-bred greyhounds and horses.

GREYHOUND

Funding for the Texas-Bred Greyhound Incentive Program is derived from 50 percent of the total breakage from greyhound racetracks. Of that portion, 25 percent is used for stakes races and the remaining 25 percent is paid to the Commission for use by the state greyhound breed registry for disbursement to the owners of Texas-bred greyhounds.

Once a month these funds are distributed by dividing the monthly

total available for awards by the number of winning Texas-bred greyhounds for that month.

HORSE

Each Texas-bred horse finishing first, second or third in any race other than a stakes race receives a purse supplement.

The supplement is funded from 98 percent of the breakage from all pari-mutuel pools and from 98 percent of one percent of all multiple two and multiple three wagering pools. These monies are distributed on a 40/40/20 percent split, respectively, among the owners, breeders, and stallion owners of the accredited Texas-bred horse.

The Texas Racing Act names the official breed registries which determine the qualifications for Texas-Bred status for their breed, maintain the eligibility lists and distribute the monetary awards.

1/1/95 - 12/31/95 DISTRIBUTIONS

Texas Greyhound Association	\$558,717
Texas Bred Stakes Races - Horse	214,498
Texas Thoroughbred Breeders' Association	2,592,778
Texas Quarter Horse Association	1,420,544
Texas Arabian Breeders Association	46,883
Texas Appaloosa Horse Club	2,505
Texas Paint Horse Breeders Association	<u>3,378</u>
TOTAL	\$4,839,303

1995 Annual Report

Equine Research

The 72nd Legislature passed a major revision of the Texas Racing Act in 1991 which included dedicating a small portion of wagers made at horse tracks to fund the Equine Research Account. The legislation also created the Equine Research Advisory Committee as an adjunct to the Texas Agricultural Experiment Station to review research proposals, recommend grant awards, and host an annual conference on equine research.

In 1995, \$66,803 was allocated to fund research projects in the fields of Agricultural Economics, Animal Science and Large Animal Medicine. An additional \$6,500 was allocated to fund the 1995 Race Horse Conference.

Drug Testing

To safeguard the interests of the wagering public the Commission oversees a comprehensive drug testing program.

This testing ensures that greyhounds and horses participating in racing are free from prohibited drugs.

Blood and urine specimens are collected from horses and urine is collected from greyhounds and then submitted to the Texas Veterinary Medical Diagnostic Laboratory at Texas A & M University (TVMDL) for testing.

If a specimen tests positive for a prohibited substance, the animal may be immediately disqualified from receiving any purse money, and an investigation is conducted. During 1995, 22,058 greyhound specimens and 11,548 horse specimens were submitted to TVMDL for testing with the following illegal substances being detected:

<u>GREYHOUND</u>		<u>HORSE</u>	
Caffeine	1	Caffeine	3
Guafenesin	1	Detomidine	3
Lidocaine	1	Flunixin meglumine	1
Pentobarbital	1	Furosemide	19
Phenylbutazone	6	(over 60 ng/ml)	
Phenylpropanolamine/ephedrine	2	Guafenesin	1
Polyethylene glycol	10	Lidocaine	5
Procaine	6	Phenylbutazone	44
Sulfadimethoxine	1	(over 5	
Sulfamethoxazole	4	micrograms/ml)	
Sulfa/Trimethoprim	5	Phenylpropanolamine	1
Theophylline	1	Polyethylene glycol	5
Trimethoprim	6	Prednisolone	1
TOTAL	45	Promazine	3
		Pyrimethamine	2
		Sulfadimethoxine	1
		Sulfamethoxazole	1
		Sulfa/Trimethoprim	2
		Trimethoprim	1
		TOTAL	96

Note: Some samples contained more than 1 drug.

Human drug testing has become an integral part of regulating the racing industry. Licensees who are suspected of using illegal drugs while performing their duties are tested. If a licensee tests positive for any illicit drug, the licensee faces a suspension and is encouraged to seek professional help. In 1995, 108 human drug tests were conducted with 45 being positive.

1995 Annual Report

GREYHOUND & HORSE RACETRACK STATISTICS 1/1/95 - 12/31/95 (UNAUDITED)

Under the Commission's rules, a racetrack may offer simulcast races as an extra wagering opportunity on a live race day. A racetrack may also offer simulcast races during a live race meeting on days when no live races are being conducted (dark day simulcasting). Additionally, a racetrack may offer simulcast races during a period of days or weeks between live race meetings (simulcast only).

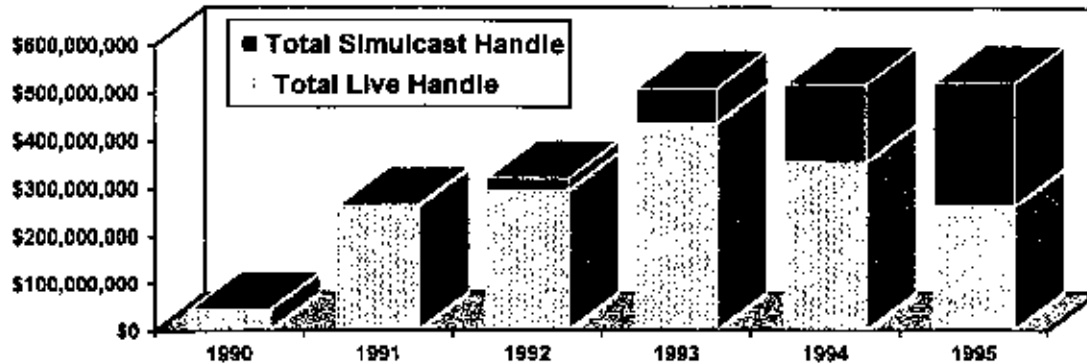
TRACKS	TOTAL HANDLE/ AVG. HANDLE	TOTAL ATTENDY AVG. ATTEND	PER CAPITA	STATES SHARE	BREAK OUT OF TOTAL HANDLE			
					# LIVE PERF	TOTAL LIVE/ AVG. LIVE	#SCAST PERF	TOTAL S'CAST/ AVG. S'CAST
CORPUS CHRISTI - Live/S'cast	\$31,080,055	335,504	\$92.67	\$523,658	446	\$21,275,867	437	\$9,814,188
Simulcast Performance Only	\$69,709 \$2,827,795 \$12,295	752 28,237 123	\$100.15	\$28,278	0	\$47,704	230	\$22,458 \$2,827,795 \$12,295
CORPUS CHRISTI-TOTAL	\$33,917,850	363,741	N/A	\$551,937	446	\$21,275,867	667	\$12,641,983
GULF - Live w/S'cast	\$149,365,794	1,183,884	\$126.17	\$3,387,272	527	\$144,680,710	172	\$4,685,084
Simulcast Performance Only	\$283,427 \$291,194 \$32,355	2,246 1,434 159	\$203.06	\$2,912	0	\$0	9	\$27,239 \$291,194 \$32,355
GULF-TOTAL	\$149,656,988	1,185,318	N/A	\$3,390,184	527	\$144,680,710	181	\$4,976,278
VALLEY - Live w/S'cast	\$11,286,088	136,840	\$82.48	\$177,836	229	\$6,497,518	192	\$4,788,568
Simulcast Performance Only	\$49,284 \$6,214,430 \$17,909	598 31,777 92	\$195.56	\$62,144	0	\$28,373	347	\$24,940 \$6,214,430 \$17,909
VALLEY-TOTAL	\$17,500,516	168,617	N/A	\$239,980	229	\$6,497,518	539	\$11,002,998
TOTAL GREYHOUND TRACKS	\$200,784,160	1,716,242	N/A	\$4,179,190	1,202	\$172,454,095	1,378	\$28,330,066
BANDERA DOWNS Simulcast Meet 1/2-3/3	\$3,057,401	8,519	\$358.89	\$30,574	0	\$0	46	\$3,057,401
BANDERA Live w/S'cast	\$66,465 \$4,464,463	185 43,258	\$103.21	\$44,645	33	\$2,713,467	33	\$66,465 \$1,750,996
Mixed Meet 3/4-6/18	\$135,287	1,311	\$297.70	\$8,678	0	\$0	31	\$53,060
Dark Day Simulcasting during Mixed Meet	\$867,791 \$27,993	2,915 94						\$867,791 \$27,993
BANDERA DOWNS - TOTAL	\$8,389,655	54,692	N/A	\$83,897	33	\$2,713,467	110	\$5,676,188
GILLESPIE COUNTY-TOTAL Live Handle - Mixed Meet	\$1,554,867	23,958	\$84.89	\$15,547	11	\$1,554,867	0	\$0
MANOR DOWNS Simulcast Meet 1/4-3/3	\$3,470,045	10,191	\$340.50	\$34,700	0	\$0	44	\$3,470,045
Live w/S'cast	\$78,865 \$6,509,873	232 44,757	\$145.45	\$65,099	31	\$3,616,705	31	\$78,865 \$2,893,168
QH Meet 3/4-6/11	\$209,996	1,444	\$348.65	\$31,811	0	\$0	47	\$93,328
Dark Day Simulcasting during QH Meet	\$3,181,110 \$67,683	9,124 194						\$3,181,110 \$67,683
Simulcast Meet 6/5-12/31	\$9,663,265 \$69,520	27,929 201	\$345.99	\$96,633	0	\$0	139	\$9,663,265 \$69,520
MANOR DOWNS - TOTAL	\$22,824,293	92,001	N/A	\$228,243	31	\$3,616,705	261	\$19,207,588

1995 Annual Report

TRACKS	TOTAL HANDLE/ AVG. HANDLE	TOTAL ATTEND/ AVG. ATTEND	PER CAPITA	STATES SHARE	# LIVE PERF	TOTAL LIVE/ AVG. LIVE	#SCAST PERF	TOTAL SCAST/ AVG. SCAST
RETAMA Live w/S'cast T Meet 4/7-9/17	\$40,815,986	478,141	\$85.36	\$408,160	96	#27,735,013	93	\$13,080,973
Dark Day Simulcasting during T Meet, ended 9/17	\$425,167	4,981	\$170.66	\$41,367	0	\$288,906	64	\$136,260
Dark Day Simulcasting during T Meet, ended 9/17	\$4,136,664	24,239	\$188.44	\$8,976	0	\$0	11	\$4,136,664
Dark Day Simulcasting between meets 9/18-9/28	\$84,635	379	\$122.07	\$72,443	24	\$3,521,801	24	\$81,596
Live w/S'cast	\$697,560	433	\$197.42	\$21,542	0	\$146,742	28	\$3,722,517
QH Meet 9/29-11/19	\$7,244,318	59,348	\$243.53	\$46,107	0	\$0	40	\$155,105
Dark Day Simulcasting during QH Meet	\$301,847	2,473						\$2,154,238
Simulcast Meet	\$2,154,238	10,912						\$76,937
11/20-12/31	\$76,937	390						\$4,610,706
	\$4,610,706	18,933						\$115,268
RETAMA PARK - TOTAL	\$59,859,472	596,336	N/A	\$598,595	120	\$31,256,814	260	\$28,602,658
SAM HOUSTON Live w/S'cast T Meet 1/1-4/2	\$24,951,740	170,374	\$146.45	\$249,517	54	\$10,867,271	54	\$14,084,469
Dark Day Simulcasting during T Meet	\$462,069	3,155	\$293.39	\$49,917	0	\$201,246	38	\$260,824
Simulcast Meet	\$4,991,680	17,014	\$241.72	\$250,019	0	\$0	102	\$4,991,680
4/3-7/13	\$131,360	448	\$120.53	\$181,295	40	\$6,498,909	40	\$131,360
Live w/S'cast	\$25,001,926	103,435	\$264.17	\$37,940	0	\$0	26	\$25,001,926
QH Meet 7/14-9/17	\$245,117	1,014	\$272.56	\$18,660	0	\$0	10	\$245,117
Dark Day Simulcasting during QH Meet	\$18,129,505	150,416	\$142.47	\$260,624	56	\$10,617,231	56	\$11,630,596
Dark Day Simulcasting between Meets 9/18-9/27	\$453,238	3,760	\$290.07	\$55,676	0	\$162,473	38	\$290,765
Live w/S'cast	\$3,794,019	14,362						\$3,794,019
T Meet 9/28-12/31	\$145,924	552						\$145,924
Dark Day Simulcasting during T Meet	\$1,865,979	6,846						\$1,865,979
	\$186,598	685						\$186,598
	\$26,062,428	182,930						\$15,445,197
	\$465,401	3,267						\$275,807
	\$5,567,637	19,194						\$5,567,637
	\$146,517	505						\$146,517
SAM HOUSTON - TOTAL	\$110,364,914	664,571	N/A	\$1,103,649	150	\$27,983,411	364	\$82,381,503
TRINITY MEADOWS Simulcast Meet 1/1-3/24	\$25,080,632	55,134	\$454.90	\$250,806	0	\$0	82	\$25,080,632
Live w/S'cast	\$305,861	672	\$247.77	\$685,492	139	\$23,075,246	139	\$305,861
Mixed Meet 3/25-10/14	\$68,549,225	276,684	\$514.97	\$58,805	0	\$166,009	57	\$45,473,979
Dark Day Simulcasting during Mixed Meet	\$493,160	1,990	\$421.56	\$182,076	0	\$0	75	\$327,151
Simulcast Meet	\$5,880,458	11,419						\$5,880,458
10/16-12/31	\$103,166	200						\$103,166
	\$18,207,590	43,191						\$18,207,590
	\$242,768	576						\$242,768
TRINITY MEADOWS-TOTAL	\$117,717,905	386,408	N/A	\$1,177,179	139	\$23,075,246	353	\$94,642,659
TOTAL HORSE TRACKS	\$320,710,906	1,817,968	N/A	\$3,207,109	484	\$90,200,310	1,348	\$230,510,596
TOTAL HORSE TRACKS	\$320,710,906	1,817,968	N/A	\$3,207,109	484	\$90,200,310	1,348	\$230,510,596
TOTAL GREYHOUND TRACKS	\$200,784,160	1,716,242	N/A	\$4,179,190	1,202	\$172,454,095	1,378	\$28,330,065
TOTAL	\$521,495,066	3,534,208	N/A	\$7,386,299	1,686	\$262,654,405	2,726	\$258,840,661

1995 Annual Report

Six Years of Pari-Mutuel Racing 1990-1995 Horse & Greyhound Tracks Combined



Note: 1990: 3 horse tracks opened, June, July & Nov., 2 greyhound tracks opened in Nov.
 1991: 4th horse track opened in late May, 2 greyhound tracks operational
 1992: 4 horse tracks operational, 3rd greyhound track opened in Nov.
 1993: 4 horse tracks & 3 greyhound tracks operational
 1994: 5th horse track opened in late April, 3 greyhound tracks operational
 1995: 1 horse track opened in April, 1 horse track closed in June, 1 greyhound track closed end of Sept.

1990-1995 Horse and Greyhound Tracks Combined

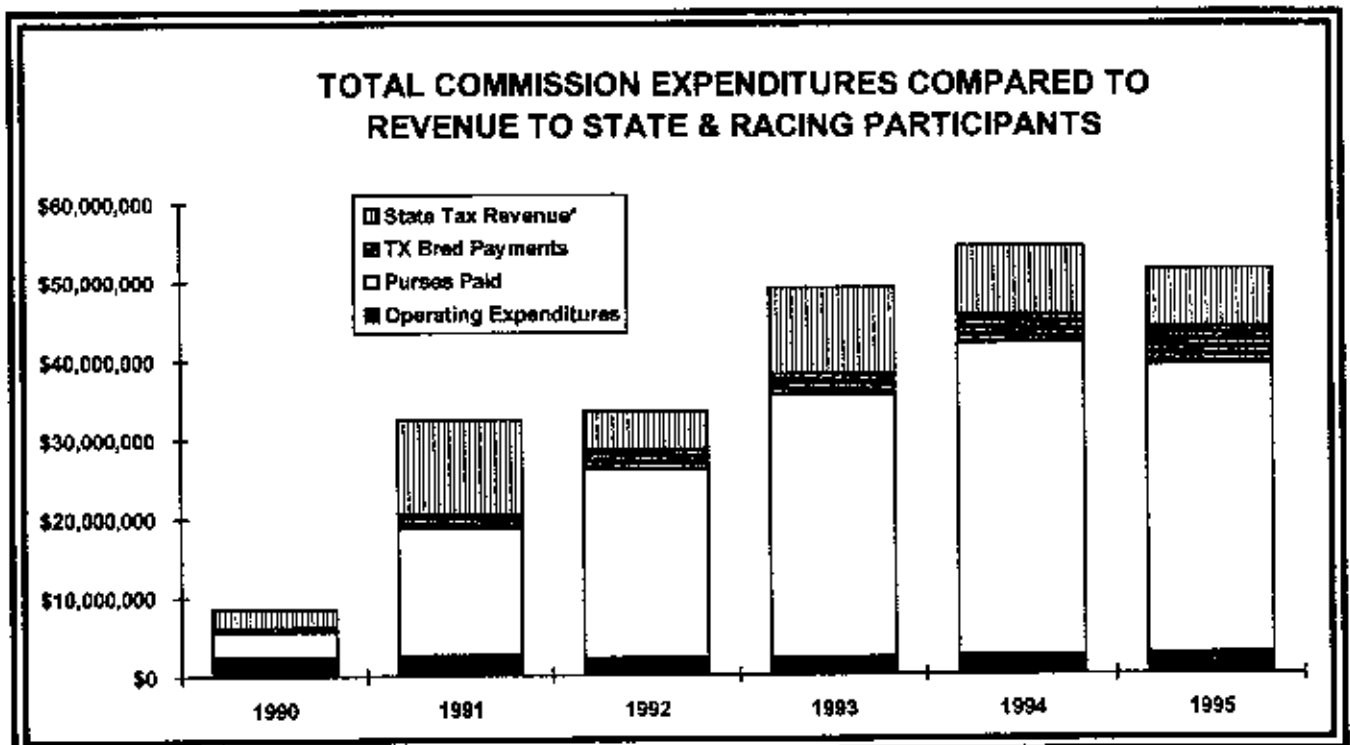
	1990	1991	1992	1993	1994	1995
HANDLE:						
Live	\$44,999,387	\$282,689,040	\$296,107,332	\$437,444,294	\$354,817,092	\$262,654,405
Simulcast	\$0	\$1,079,138	\$24,673,726	\$72,501,554	\$164,621,820	\$258,840,661
TOTAL	\$44,999,387	\$283,768,178	\$320,781,058	\$509,945,848	\$519,438,912	\$521,495,066
RACE DAYS						
Live	225	1,158	1,340	1,889	1,846	1,886
Simulcast	0	3	292	760	2,077	2,726
PURSES	\$3,054,354	\$16,239,026	\$23,928,460	\$33,231,422	\$39,402,952	\$36,544,986
PD.						
ATTENDANCE	560,722	2,480,941	2,733,950	3,853,785	3,772,317	3,634,208

1995 Annual Report

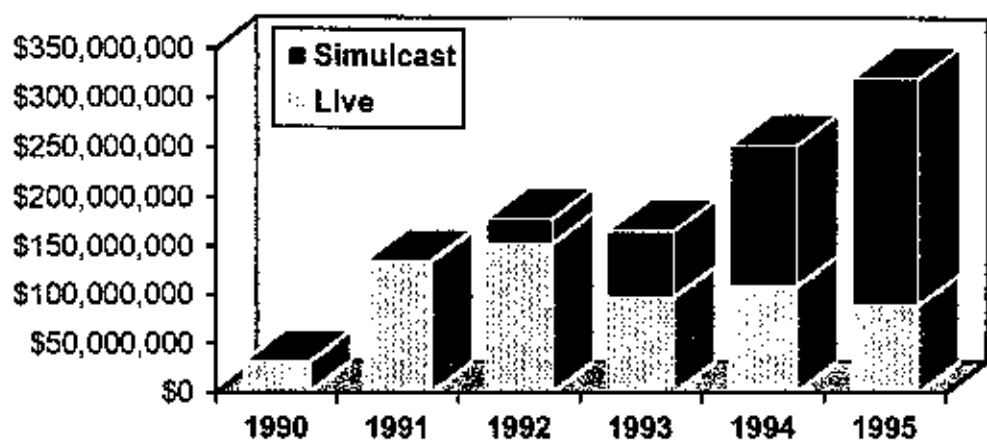
STATISTICAL COMPARISON OF GROWTH IN ACTIVITY & REVENUE VS. COMMISSION EXPENDITURES

	1990	1991	1992	1993	1994	1995
Number of Tracks	5	6	7	7	8	9
Handle	\$44,999,387	\$263,768,178	\$320,781,058	\$509,945,848	\$519,438,912	\$521,495,066
Attendance	560,722	2,686,062	2,733,959	3,853,785	3,772,317	3,534,208
Purses Paid	\$3,054,354	\$16,239,026	\$23,928,460	\$33,231,423	\$39,402,953	\$36,544,986
TX Bred Payments	\$594,200	\$1,709,373	\$2,500,610	\$2,678,486	\$3,730,191	\$4,839,303
State Tax*	\$2,384,261	\$11,900,421	\$4,758,083	\$10,864,563	\$8,633,684	\$7,386,299
Operating Expenditures (FY)	\$2,554,123	\$2,594,524	\$2,241,812	\$2,221,954	\$2,489,382	\$2,577,291

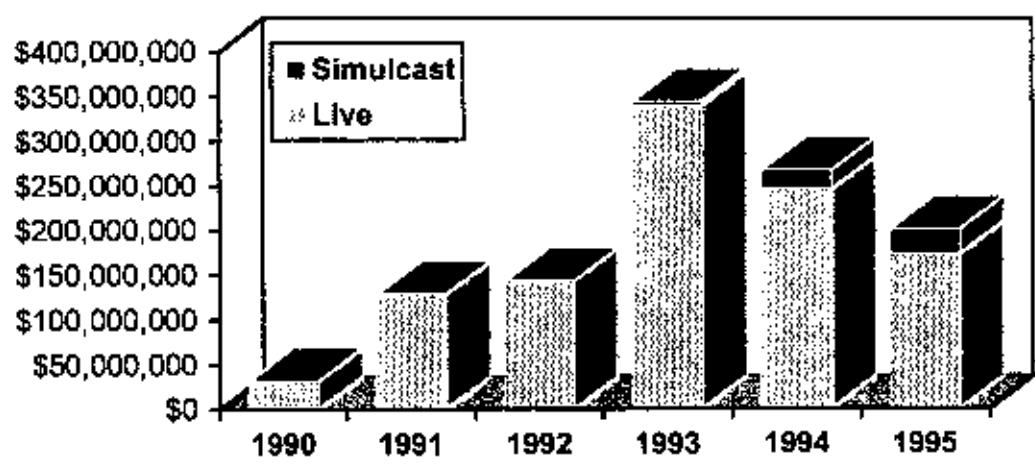
*The Legislature lowered the tax rate to the State in 1991.



1995 Annual Report

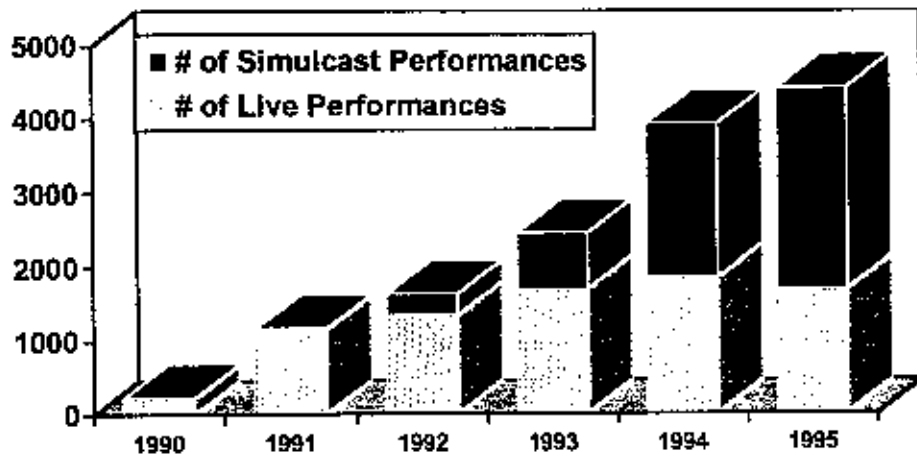


**Source of Handle - Horse Tracks
1990-1995**

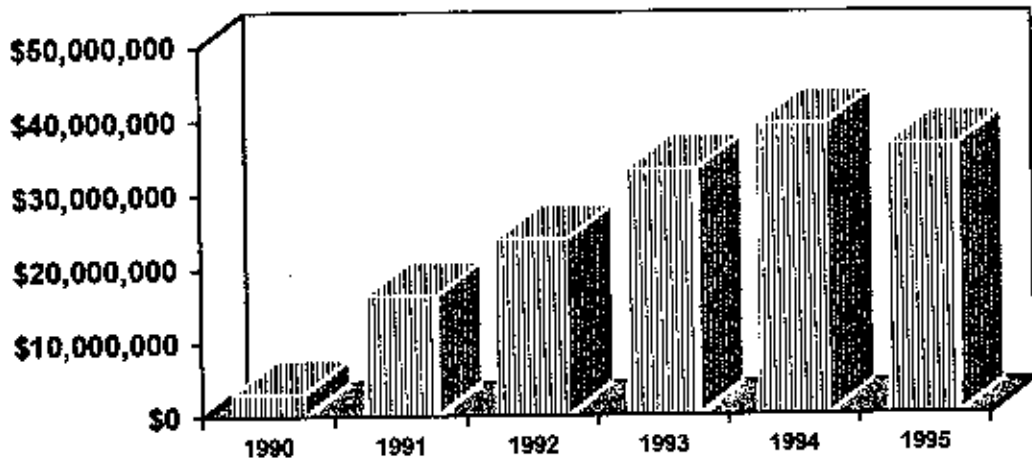


**Source of Handle - Greyhound Tracks
1990-1995**

1995 Annual Report



**Number of Live & Simulcast Performances
Horse & Greyhound Tracks Combined
1990-1995**

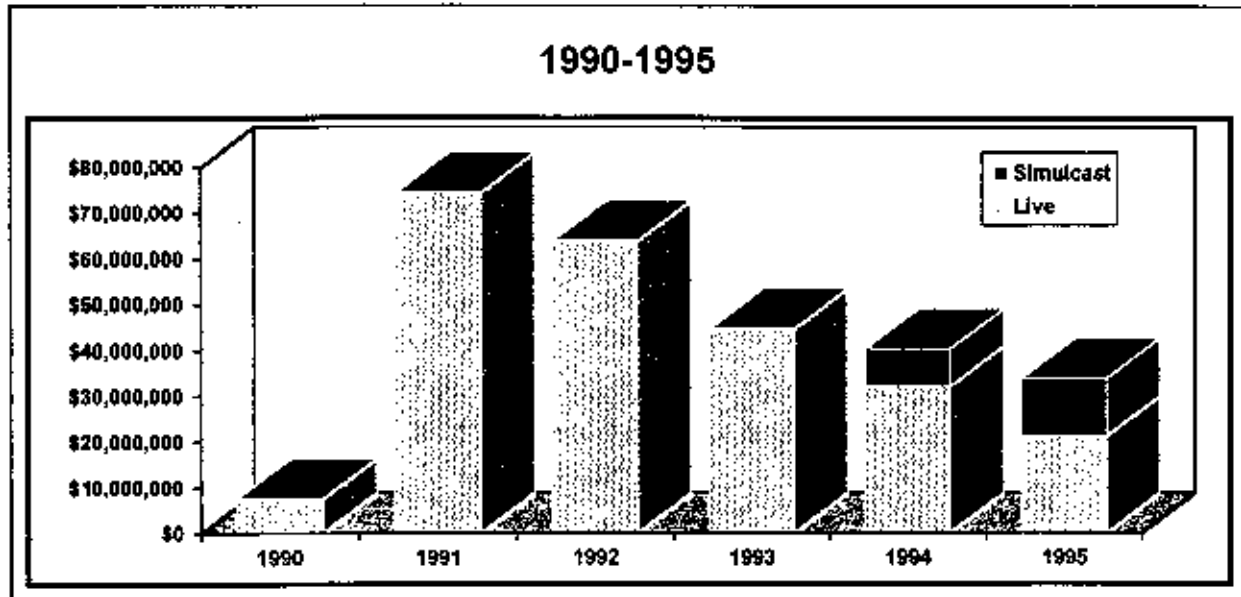


**Total Purses Paid
Horse & Greyhound Tracks
1990-1995**

1995 Annual Report

Corpus Christi Greyhound Race Track

Corpus Christi Greyhound Race Track opened for racing on November 15, 1990. The track's payroll expense for 1995 for its 274 employees was over \$1.8 million. In 1995 the track paid over \$540,000 in admissions, liquor, sales and real estate taxes. Charitable donations totaled over \$32,000.



Note: 11/15/90 Track opened
 09/01/91 Pari-mutuel take out structure changed
 05/20/92 First scratch off lottery ticket sold
 11/07/92 First Lotto ticket sold

	1990	1991	1992	1993	1994	1995
HANDLE						
Live	\$7,514,299	\$74,584,472	\$63,905,556	\$44,721,484	\$32,135,826	\$21,275,867
Simulcast	\$0	\$0	\$16,227	\$0	\$8,248,773	\$12,641,983
TOTAL	\$7,514,299	\$74,584,472	\$63,921,783	\$44,721,484	\$40,384,599	\$33,917,850
PERFORMANCES						
Live	57	459	455	456	456	446
Simulcast	0	0	1	0	465	667
PURSES PD.	\$263,001	\$2,664,770	\$3,139,226	\$2,180,470	\$1,778,615	\$1,533,539
ATTENDANCE	119,632	949,399	775,648	549,429	454,623	363,741

Inaugural Meet: 11/15/90

Size of Track: 1,347 feet; 22 feet wide

Total Seating Capacity: 2,500

Kennel Capacity: 60 crates - 18 kennels

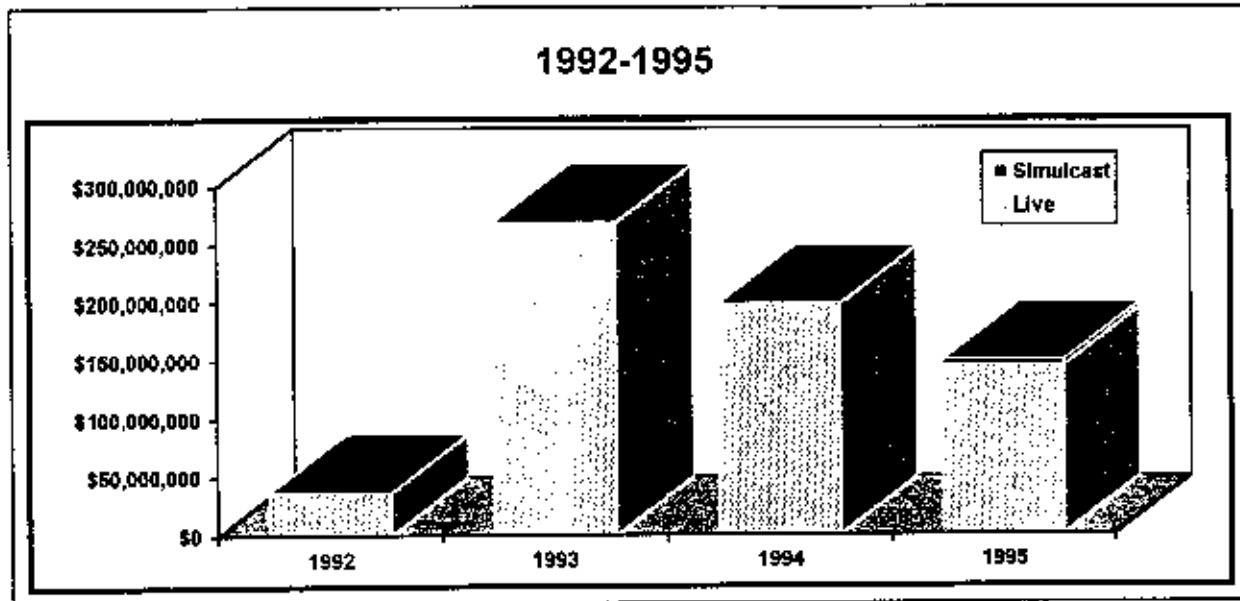
Attendance Record: 6,242 on 11/23/90

Wagering Record: \$355,166 on 2/28/92

1995 Annual Report

Gulf Greyhound Park

In its third full year of operations, Gulf maintained its position as the number one greyhound track in the country in both total handle and attendance. The track's payroll expense for 1995 for its 950 employees was over \$9.8 million. In 1995 the track paid over \$2.2 million in admissions, liquor, sales and real estate taxes. Charitable donations totaled \$124,650.



Note: 05/20/92 First scratch off lottery ticket sold
 11/07/92 First Lotto ticket sold
 11/10/92 Track opened

	1992	1993	1994	1995
HANDLE				
Live	\$36,972,037	\$268,382,614	\$198,237,141	\$144,680,710
Simulcast	<u>\$0</u>	<u>\$0</u>	<u>\$7,448</u>	<u>4,976,278</u>
TOTAL	\$36,972,037	\$268,382,614	\$198,244,589	\$149,656,988
PERFORMANCES				
Live	65	494	524	527
Simulcast	0	0	1	181
PURSES PD.	\$1,848,601	\$13,419,313	\$9,912,207	\$8,102,927
ATTENDANCE	339,544	2,069,888	1,482,336	1,185,318

Inaugural Meet: 11/10/92

Size of Track: 1/4 mile; 22 feet wide

Total Seating Capacity: 8,862

Kennel Capacity: 60 crates - 18 kennels

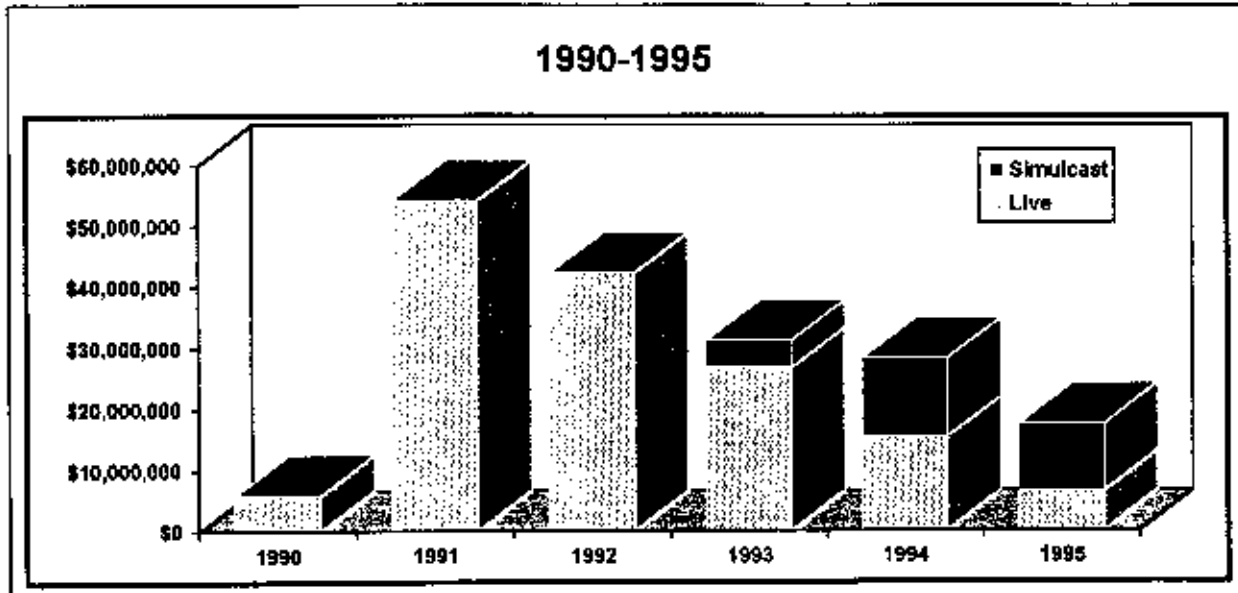
Attendance Record: 17,070 on 1/22/94

Wagering Record: \$1,427,219 on 7/5/93

1995 Annual Report

Valley Greyhound Park

Valley Greyhound Park was the first greyhound track to open in Texas on November 14, 1990. The track's payroll expense for 1995 for its 185 employees was almost \$1.5 million. In 1995 the track paid over \$191,000 in admissions, liquor, sales and real estate taxes. Charitable donations totaled \$5,118. As VGP's efforts to find new markets for its product failed, the track ceased live operations on September 4, 1995 and simulcast operations on September 30, 1995. VGP has race days beginning December 26, 1996.



Note: 11/14/90 Track opened
 09/01/91 Pari-mutuel take out structure changed
 05/20/92 First scratch off lottery ticket sold
 11/07/92 First Lotto ticket sold
 10/01/95 Track closed until 12/26/96

	1990	1991	1992	1993	1994	1995
HANDLE						
Live	\$5,914,833	\$54,243,886	\$42,320,824	\$26,677,486	\$15,319,387	\$6,497,516
Simulcast	\$0	\$0	\$8,664	\$4,498,058	\$12,964,410	\$11,002,998
TOTAL	\$5,914,833	\$54,243,886	\$42,329,488	\$42,329,488	\$28,283,797	\$17,500,516
PERFORMANCES						
Live	55	418	420	388	370	229
Simulcast	0	0	1	221	623	539
PURSES PD.	\$207,019	\$1,945,268	\$2,084,081	\$1,415,154	\$1,152,195	\$675,198
ATTENDANCE	100,351	684,080	504,389	360,654	288,635	168,617

Inaugural Meet: 11/14/90

Size of Track: 1/4 mile; 22 feet wide

Total Seating Capacity: 2,500

Kennel Capacity: 60 crates - 18 kennels

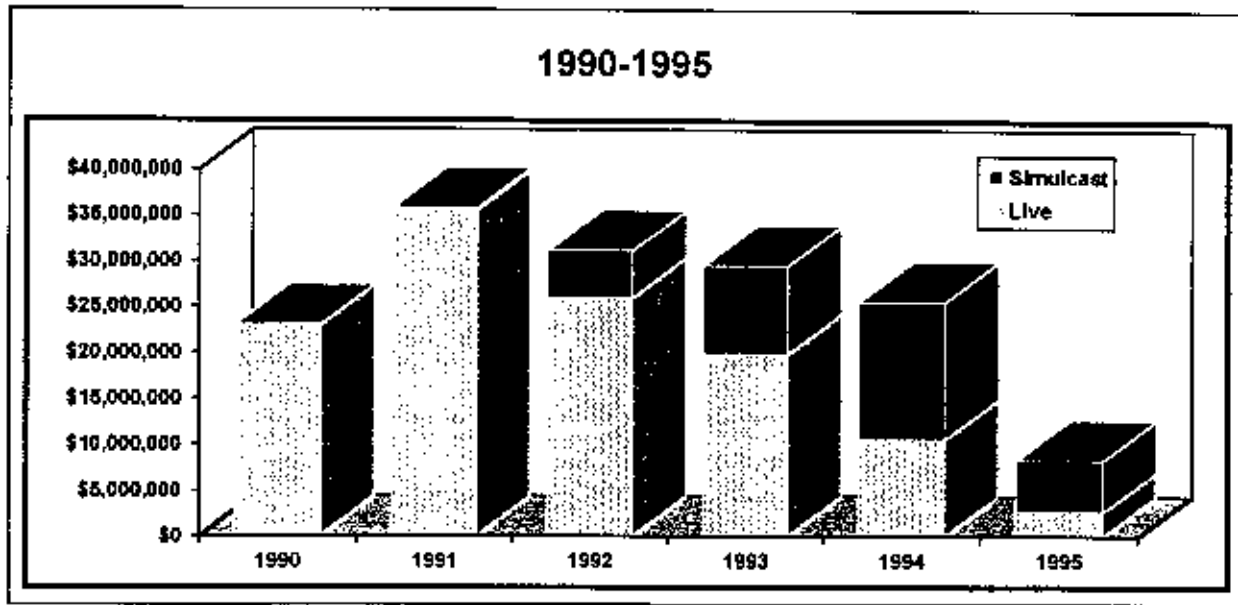
Attendance Record: 4,712 on 11/23/90

Wagering Record: \$327,827 on 12/07/91

1995 Annual Report

Bandera Downs - Class 2

Bandera Downs ceased operations on June 16, 1995, canceling the remaining 10 race days of their meet, citing mounting debts caused by sharp declines in handle and attendance when Retama Park opened. In an agreed order with the Commission, Bandera Downs' license was placed in suspense until March 1, 1996. By that date, all monies owed to horse owners who had accounts as of June 20, 1995 and all monies owed to the state, other governmental agencies, and taxing authorities must be paid in full, and a plan for providing new management and capitalization must be approved by the Commission or Bandera Downs will surrender its license.



Note: 07/06/90 Track opened
 09/01/91 Pari-mutuel take out structure changed
 05/20/92 First scratch off lottery ticket sold
 11/07/92 First Lotto ticket sold
 06/18/95 Track closed, canceling 10 race days

	1990	1991	1992	1993	1994	1995
HANDLE						
Live	\$22,941,593	\$35,605,637	\$26,028,301	\$19,875,839	\$10,651,121	\$2,713,467
Simulcast	\$0	\$160,670	\$5,163,300	\$9,670,656	\$14,943,345	\$5,676,188
TOTAL	\$22,941,593	\$35,766,307	\$31,191,601	\$29,546,495	\$25,594,466	\$8,389,655
RACE DAYS						
Live	67	120	117	114	87	33
Simulcast	0	1	132	177	240	110
PURSES PD.	\$1,465,675	\$3,467,359	\$3,800,819	\$3,508,467	\$2,297,470	\$1,205,204
ATTENDANCE	229,136	284,690	271,342	219,827	167,596	54,692

Inaugural Meet: 7/6/90

Total Stall Space: 930

Size of Track: 7/8 mile; 75 feet wide

Attendance Record: 7,814 on 9/3/90

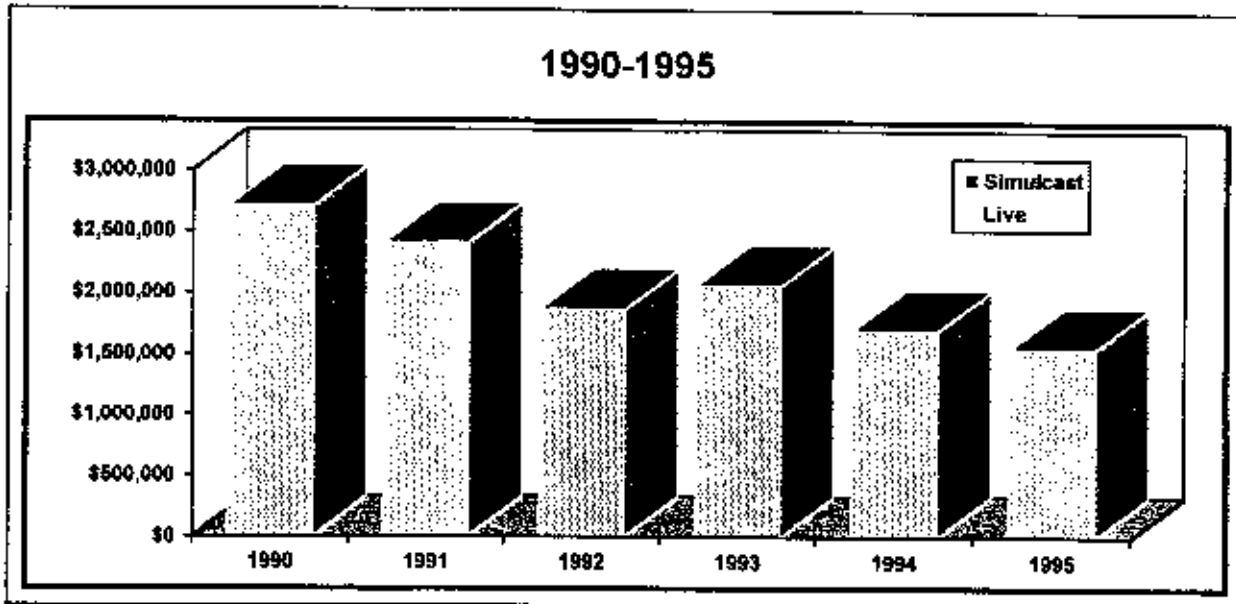
Total Seating Capacity: 3,050

Wagering Record: \$550,541 on 5/16/92

1995 Annual Report

Gillespie County Fair & Festivals- Class 3

Gillespie County Fair & Festivals is a non-profit county fair organization located in Fredericksburg. The association is known for its year-round support and contributions to area youth and agricultural programs. The track's payroll expense for 1995 for its 96 employees was \$116,000. Over \$32,000 was paid in sales and real estate taxes.



Note: 05/26/90 Track opened
 09/01/91 Pari-mutuel take out structure changed
 05/20/92 First scratch off lottery ticket sold
 11/07/92 First Lotto ticket sold

	1990	1991	1992	1993	1994	1995
HANDLE						
Live	\$2,710,647	\$2,408,853	\$1,868,998	\$2,066,862	\$1,699,711	\$1,554,667
Simulcast	\$0	\$0	\$0	\$0	\$0	\$0
TOTAL	\$2,710,647	\$2,408,853	\$1,868,998	\$2,066,862	\$1,699,711	\$1,554,667
RACE DAYS						
Live	12	14	10	12	12	11
Simulcast	0	0	0	0	0	0
PURSES PD.	\$307,353	\$361,571	\$360,257	\$496,987	\$493,917	\$437,730
ATTENDANCE	47,491	29,323	22,163	29,077	27,201	23,958

Inaugural Meet: 5/26/90

Size of Track: 5/8 mile; 80 feet wide

Total Seating Capacity: 3,200

Total Stall Space: 200

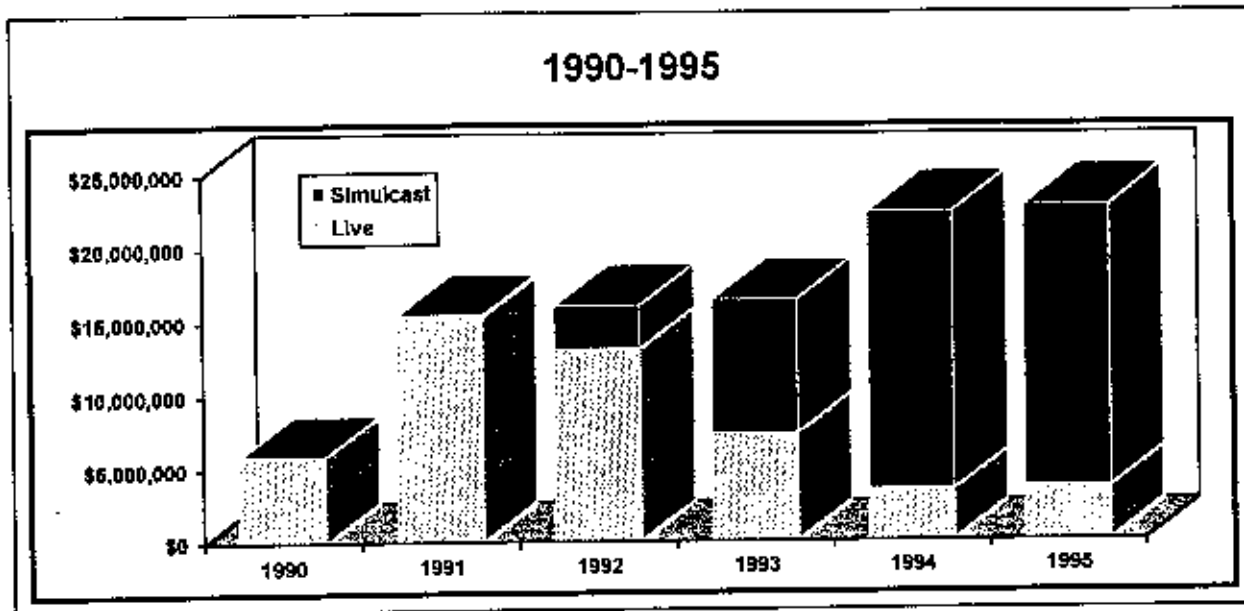
Attendance Record: 7,574 on 7/4/90

Wagering Record: \$352,854 on 7/4/90

1995 Annual Report

Manor Downs - Class 2

Manor Downs, just east of Austin, opened on October 11, 1990. Payroll expense for its 125 employees in 1995 was over \$888,000, with over \$95,000 paid in admissions, liquor, sales and real estate taxes. Charitable contributions totaled \$7,000.



Note: 10/11/90 Track opened
 09/01/91 Pari-mutuel take out structure changed
 05/20/92 First scratch off lottery ticket sold
 11/07/92 First Lotto ticket sold

	1990	1991	1992	1993	1994	1995
HANDLE						
Live	\$5,918,015	\$15,356,040	\$13,158,030	\$7,329,573	\$3,466,252	\$3,616,705
Simulcast	\$0	\$136,546	\$2,967,187	\$9,129,160	\$18,957,918	\$19,207,588
TOTAL	\$5,918,015	\$15,492,586	\$16,125,217	\$16,458,733	\$22,424,170	\$22,824,293
RACE DAYS						
Live	34	90	74	58	31	31
Simulcast	0	1	81	159	254	261
PURSES PD.	\$811,306	\$2,327,790	\$1,719,642	\$1,754,863	\$1,194,251	\$2,268,000
ATTENDANCE	64,112	161,585	132,954	97,963	85,269	92,001

Inaugural Meet: 10/11/90

Size of Track: 550 yd. straightaway; 80 feet wide

Total Seating Capacity: 2,500

Total Stall Space: 673

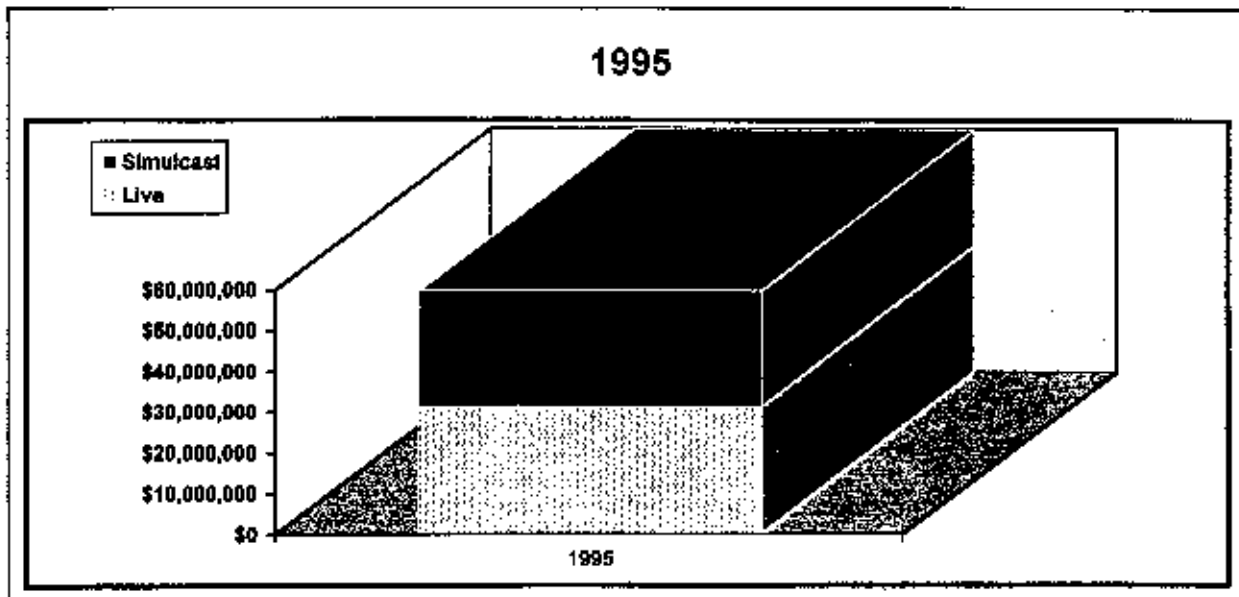
Attendance Record: 3,829 on 5/19/91

Wagering Record: \$414,794 on 12/16/90

1995 Annual Report

Retama Park - Class 1

Retama Park opened on April 7, 1995. In 1995 payroll expense for its 924 employees, excluding concessions, was over \$5.5 million, with over \$700,00 paid in admissions, liquor, and sales taxes. Charitable contributions totaled \$5,394. In November of 1995, the Commission approved Retama's request to cancel the last four days of live racing, citing cash flow problems. Retama continues to offer simulcast wagering as management seeks additional capital.



Note: 04/05/95 Track opened

1995	
HANDLE	
Live	\$31,256,814
Simulcast	<u>\$28,602,658</u>
TOTAL	\$59,859,472
RACE DAYS	
Live	120
Simulcast	260
PURSES PD.	\$6,523,552
ATTENDANCE	596,336

Inaugural Meet: 4/5/95

Size of Track: 1 mile oval, 7/8 chute, 7/8 turf

Total Seating Capacity: 5,573

Total Stall Space: 1,288

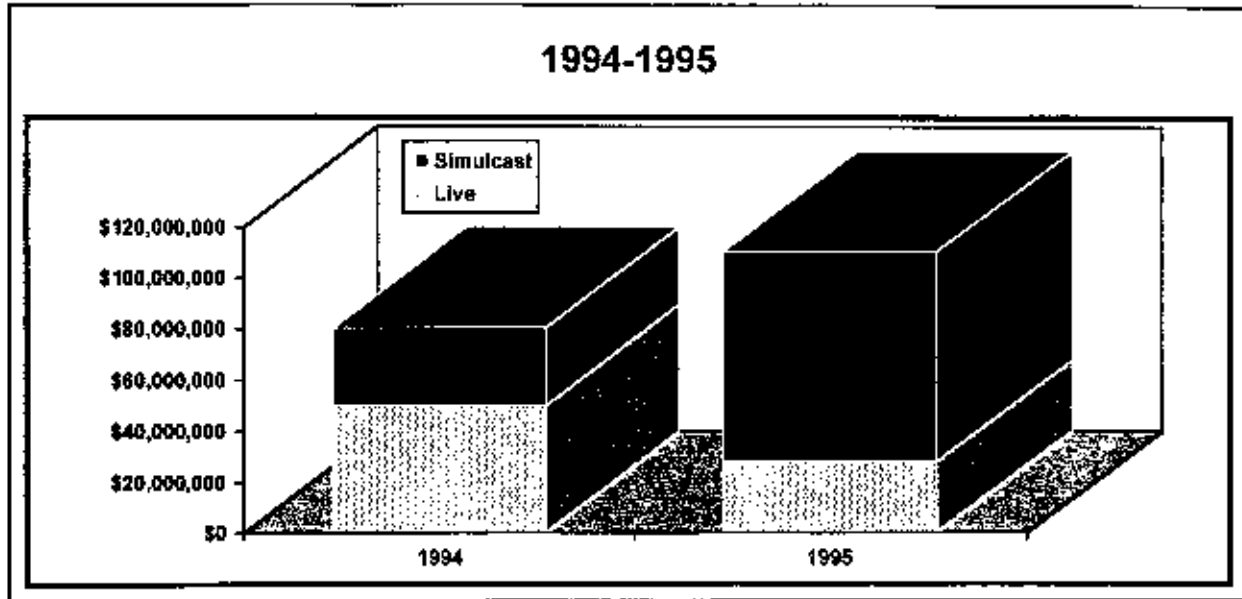
Attendance Record: 29,631 on 4/7/95

Wagering Record: \$705,712 on 4/7/95

1995 Annual Report

Sam Houston Race Park - Class 1

Sam Houston, in its second year of operation, emerged from a Chapter 11 reorganization in September of 1995 without any closings or slowdowns. The total payroll expense for its 773 employees was just under \$8 million. The track paid almost \$1.7 million in admissions, liquor, real estate and sales tax. Over \$31,000 was donated to charities.



Note: 04/29/94 Track opened

	1994	1995
HANDLE		
Live	\$49,958,832	\$27,983,411
Simulcast	\$30,455,131	\$82,381,503
TOTAL	\$80,413,963	\$110,364,914
RACE DAYS		
Live	159	150
Simulcast	214	364
PURSES PD.	\$12,173,921	\$7,540,287
ATTENDANCE	805,648	664,571

Inaugural Meet: 4/29/94

Size of Track: 1 mile oval; 80 feet wide, 7/8 turf

Total Seating Capacity: 7,000

Total Stall Space: 1,224

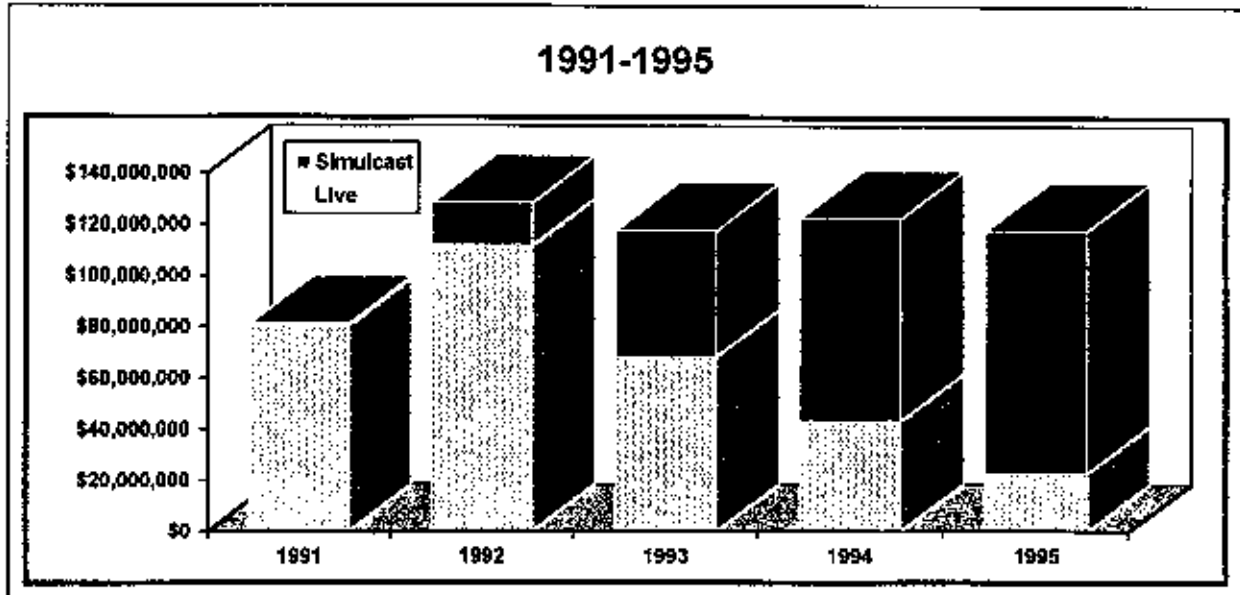
Attendance Record: 16,568 on 4/29/94

Wagering Record: \$1,281,157 on 4/29/94

1995 Annual Report

Trinity Meadows Raceway - Class 1

Trinity Meadows received a Class 1 license effective January 1994 as part of a lawsuit settlement conditioned that the track be expanded to a one mile oval by January of 1996 or its license would revert to a Class 2. As no expansion has begun, it is anticipated that the license will revert to Class 2 on February 24, 1996. In 1995, total payroll expense for its 300 employees was \$3.9 million. Almost \$2.5 million was paid in admissions, sales and real estate taxes, with \$19,072 paid to charities.



Note: 06/01/91 Track opened
 09/01/91 Pari-mutuel take out structure changed
 05/20/92 First scratch off lottery ticket sold
 11/07/92 First Lotto ticket sold

	1991	1992	1993	1994	1995
HANDLE					
Live	\$80,490,152	\$111,828,695	\$68,390,436	\$43,348,822	\$23,075,246
Simulcast	\$781,922	\$16,543,239	\$49,203,680	\$79,044,795	\$94,642,659
TOTAL	\$81,272,074	\$128,371,944	\$117,594,116	\$122,393,617	\$117,717,905
RACE DAYS					
Live	57	208	167	207	139
Simulcast	1	79	203	280	353
PURSES PD.	\$5,465,388	\$10,975,834	\$10,456,168	\$10,400,377	\$8,258,549
ATTENDANCE	371,864	687,919	527,047	481,009	386,408

Inaugural Meet: 5/29/91

Size of Track: 3/4 mile; 80 feet wide

Total Seating Capacity: 5,500

Total Stall Space: 990

Attendance Record: 17,515 on 6/1/91

Wagering Record: \$1,583,453 on 5/2/92

1995 Annual Report

Lone Star Park at Grand Prairie - Class 1

Lone Star Park at Grand Prairie completed financing in October of 1995 and immediately commenced construction of a 36,000 square foot Simulcast Pavilion as part of their overall \$96 million project. The pavilion is scheduled to open in the spring of 1996. Construction of the grandstand, stable area and track surfaces is underway in preparation for eleven live race days beginning on December 14, 1996.

Located just north of Interstate 30 on Belt Line Road in Grand Prairie, Lone Star Park consists of a grandstand, stable area, dirt and turf track, European-style paddock, simulcast pavilion and an adjacent Family Fun Park. Payroll projections are in excess of \$3 million in 1996.

Longhorn Downs - Class 2

Longhorn Downs, Inc. received a Class 2 license in 1989. The company originally planned to construct a \$35 million facility in Round Mountain. In 1993, Midpointe Racing, L.C. one of the original applicants for a Class 1 license in Dallas County, acquired a 97.5% interest in Longhorn. The Commission approved Longhorn Downs' request to relocate its license to a site in Grant Prairie. Midpointe then merged with Lone Star Jockey Club. In late 1994, the Commission approved an agreement that returned control of the Longhorn license to its original owners and the location of the license to Round Mountain.

Lubbock Downs - Class 2

Lubbock Downs received a Class 2 license in 1989. In 1990, Lubbock Downs voluntarily surrendered its license in lieu of revocation, due to its inability to obtain financing to construct the tract. In LO-92-001 (1992), the Attorney General's office held that newly enacted Section 6.19 of the Texas Racing Act required the Commission to reinstate Lubbock Downs' license. The license was reinstated on January 31, 1992. The Commission approved a site change to Slaton in June of 1994. Funding for the project continues to be sought.

1995 Annual Report

LICENSED RACETRACK ADDRESSES & PHONE NUMBERS

Greyhound Racetracks:

CORPUS CHRISTI GREYHOUND RACE TRACK

P. O. Box 9087, Corpus Christi, TX 78469, Phone 800 580-7223, Fax 512 289-4307

GULF GREYHOUND PARK

P. O. Box 488, La Marque, TX 77568-0488, Phone 800 275-2946, Fax 409 986-9700

VALLEY GREYHOUND PARK

Ladbroke Racing Corporation, Foster Plaza 9, 750 Holiday Dr. Pittsburgh, PA 15220, Phone 412 937-4410, Fax 412 937-4418

Horse Racetracks:

BANDERA DOWNS

P. O. Box 1775, Bandera, TX 78003, Phone 210 796-7781, Fax 210 796-4682

GILLESPIE COUNTY FAIR & FESTIVALS ASSOCIATION

P. O. Box 526, Fredericksburg, TX 78624, Phone 210 997-2359, Fax 210 997-9013

LONE STAR PARK AT GRAND PRAIRIE

1001 Meyers Road, Grand Prairie, TX 75050 Phone 214 263-7223, Fax 214 262-5622

LONGHORN DOWNS

P. O. Box 1, Round Mountain, TX 78663, Phone 210 825-3233, Fax 210 825-3276

LUBBOCK DOWNS

Route 10, Box 211, Lubbock, TX 79404, Phone 806 745-1122, Fax 806 748-1689

MANOR DOWNS

P. O. Box 141309, Austin, TX 78714, Phone 512 272-5581, Fax 512 272-5642

RETAMA PARK

P. O. Box 47535, San Antonio, TX 78265-7535, Phone 800 473-8262, Fax 210 651-7097

SAM HOUSTON RACE PARK

P. O. Box 2323, Houston, TX 77252-2323, Phone 713 807-8700, Fax 713 807-8777

TRINITY MEADOWS

P. O. Box 121789, Fort Worth, TX 76121, Phone 817 441-9240, Fax 817 441-6284

COPIES OF THIS PUBLICATION HAVE BEEN DISTRIBUTED IN COMPLIANCE WITH THE STATE DEPOSITORY LAW AND ARE AVAILABLE FOR PUBLIC USE THROUGH THE TEXAS STATE PUBLICATIONS DEPOSITORY PROGRAM AT THE TEXAS STATE LIBRARY AND OTHER STATE DEPOSITORY LIBRARIES.

